

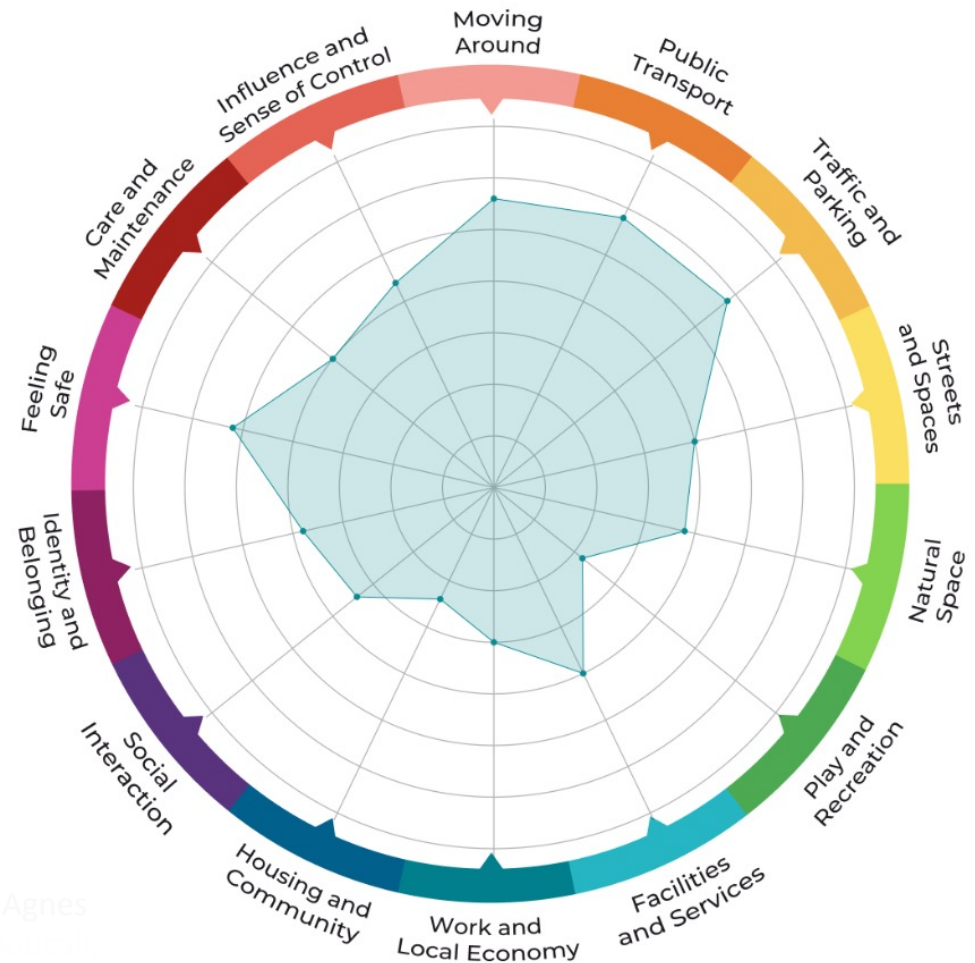
# Item 1: Photographic Survey of Lochrin Basin



This photographic survey of Lochrin Basin represents the site and illustrates some of the areas for growth. From left to right: a business run from a canal boat; an art installation looking over the basin; a single planter of trees and plants; a close-up of the canal water; and an empty business overlooking the basin.

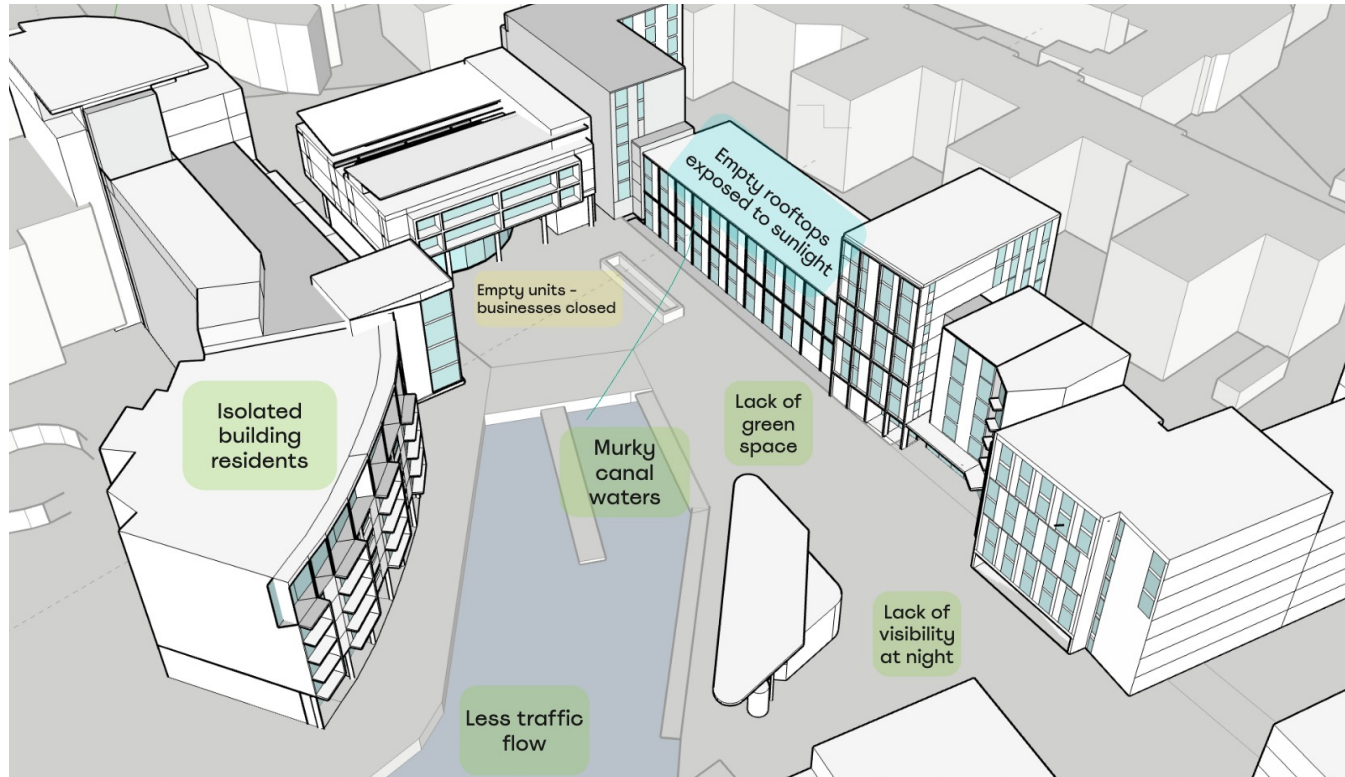
# Item 2: Place Standard Assessment of Lochrin Basin

The Place Standard Tool facilitates a holistic assessment of a site, using numerical rankings of 14 physical and social elements plotted on a circular chart. We collectively ranked each element and identified aspects in which Lochrin Basin is more sustainable, such as 'Moving Around' and 'Traffic and Parking' and aspects which need to be improved, such as 'Natural Space' and 'Housing and Community.'



Place Standard Assessment using the Place Standard Tool (available at <https://www.ourplace.scot/tool>). Created by Agnes Rijstabel, Catherine Modert, Biesha Christian, Iain Macdonald, Nik Larson, and Yadu Chengarapallil Jyothikumar on November 9, 2023

# Item 3: A Digital Visualisation of the Site's Challenges

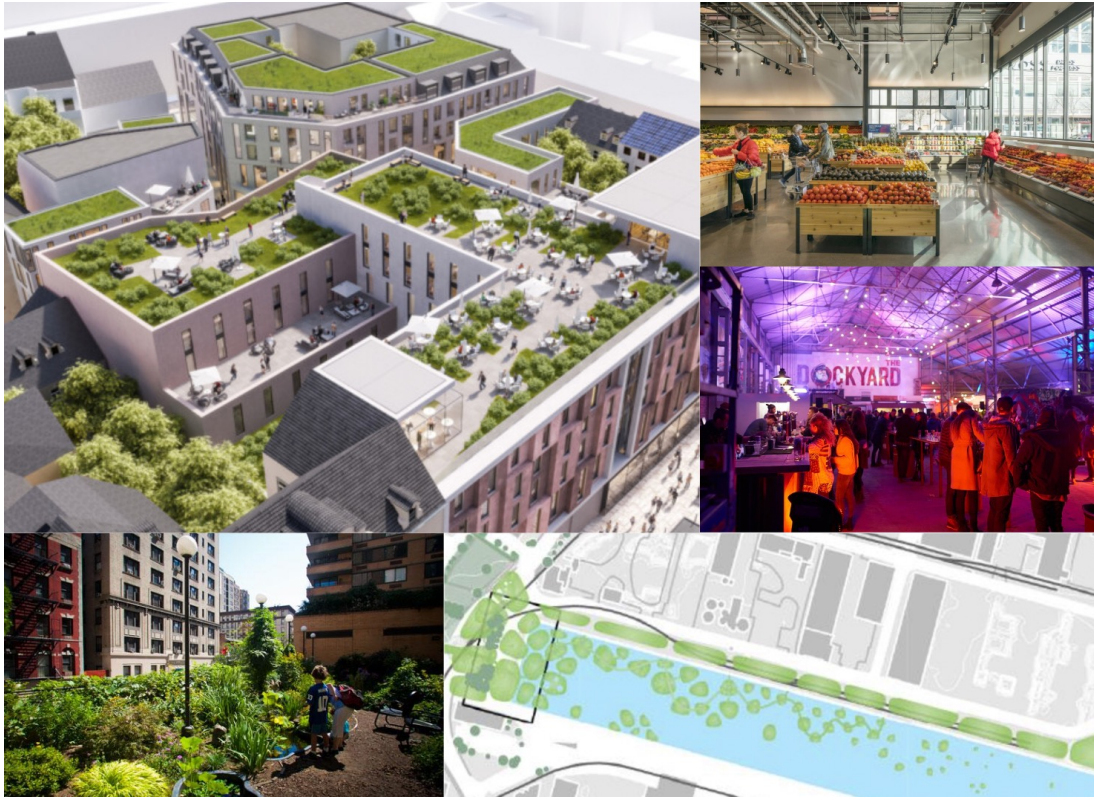


This representation of the site, created using the Digital Twin SketchUp, places the challenges identified in the Place Standard Tool in the context of the site. These fit into three main categories: a lack of social interaction and connection, a lack of green space, and a need for more social and economic opportunities.

Created using SketchUp by Agnes Rijstabel, Catherine Modert, Biesha Christian, Lauren McDougall, Nik Larson, and Yadu Chengarapallil Jyothikumar on November 10, 2023



# Item 4: Visions for Co-creating Place at Lochrin Basin

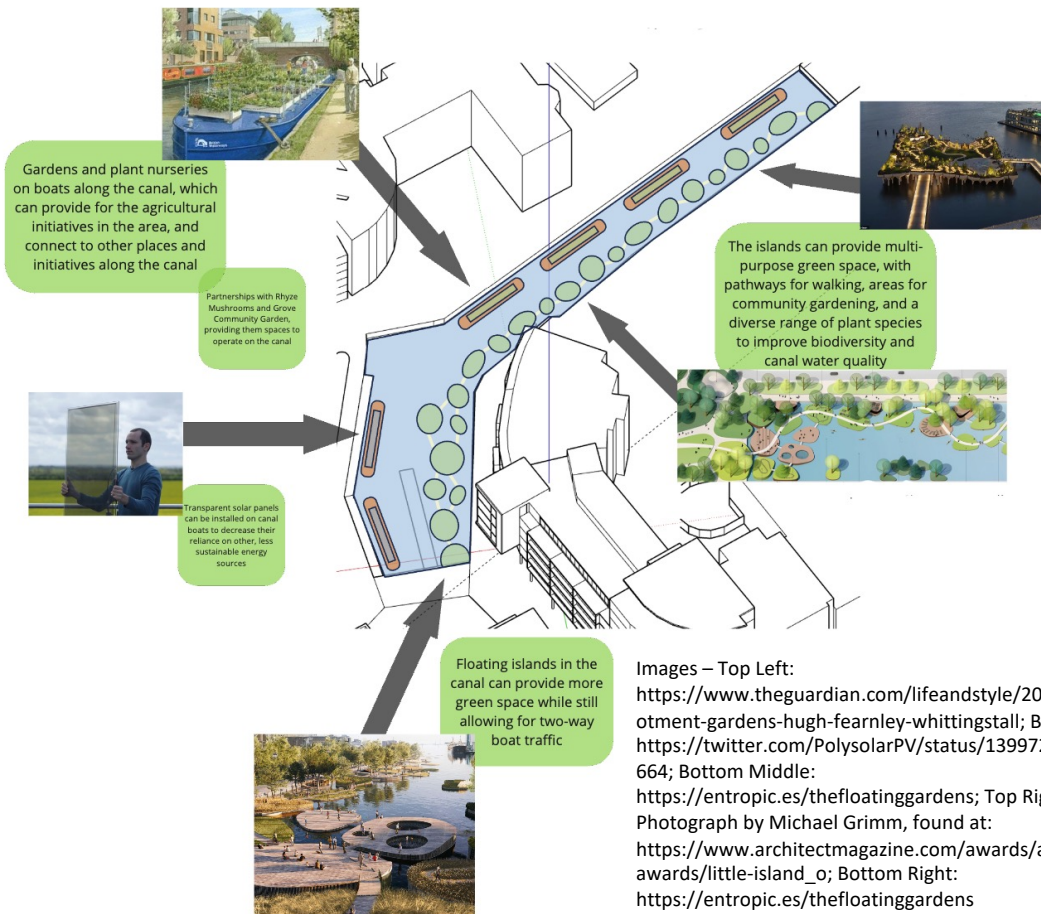


This vision board depicts two of the main approaches that guided our strategy: creating space for community gardens and agriculture on roofs as well as on the canal, and transforming the empty businesses into co-operative, community run enterprises, including a market for selling produce from the agricultural initiatives.

Images - Top Left: <https://www.chapmantaylor.com/projects/quartier-fuenfgassen>; Bottom Left: <https://thelotusgarden.org/gallery/>; Top Right: <https://mg2.com/latest/understanding-the-modern-grocery-shopper/>; Middle Right: <https://foodanddrink.scotsman.com/food/the-best-new-restaurants-in-glasgow-for-you-to-check-out/>; Bottom Right: <https://entropic.es/thefloatinggardens>

Created by Agnes Rijstabel, Catherine Modert, Biesha Christian, Lauren McDougall, Nik Larson, and Yadu Chengarapallil Jyothikumar on November 10, 2023

# Item 5: Integrating Blue, Green, and Community Infrastructure on the Canal



Images – Top Left: <https://www.theguardian.com/lifeandstyle/2009/feb/26/allotment-gardens-hugh-fearnley-whittingstall>; Bottom Left: <https://twitter.com/PolysolarPV/status/1399724787828678664>; Bottom Middle: <https://entropic.es/thefloatinggardens>; Top Right: Photograph by Michael Grimm, found at: [https://www.architectmagazine.com/awards/al-design-awards/little-island\\_o](https://www.architectmagazine.com/awards/al-design-awards/little-island_o); Bottom Right: <https://entropic.es/thefloatinggardens>

Inspired by a proposition for a canal park in Vejle, Denmark, this strategy aims to create more green space and land for community agricultural initiatives. The incorporation of the canal and canal boats into the strategy acknowledges that the canal is a central part of the site, and an integration of blue and green infrastructure is crucial to effectively address sustainability in Lochrin Basin.